

Controls and Objects

NS Basic/CE comes with a selection of controls. Third party controls are also supported. Use the AddObject statement to add a control to a project. Here are some of the ObjectID names for controls that can be used with NS Basic/CE

ADOCE.recordset	Database Object
ADOCE.recordset.3.0	Database Object - Pocket PC
AppLaunch.Launch	File launcher
AWaveCE.Sound	Audio control
Checkbox	Standard checkbox
Combobox	Standard comboBox
ComboBoxThing.	Combobox with extended
ComboBoxThing	item capabilities
Comm	Serial communications
CommandButton	Standard command button
Date	Standard date picker
DataViewer.DataViewer	Virtual list view
Dialog	Standard dialogs
EasyInk.InkControl	Signature capture
File	Simple File I/O
FileSystem	File System functions
Finance	Financial Functions
Frame	Container for other objects
Grid	Spreadsheet style interface
Hscrollbar	Horizontal Scrollbar
IDSSAPI.Core	Core API
IDSSAPI.Inet	FTP communication
IDSSAPI.Memory	System memory access
IDSSAPI.Power	Battery information
IDSSAPI.WindowHelper	Window helper
Image	For ImageList, TreeView
ImageList	Show list of images
IPWorks.* (22 controls)	Complete set of Internet tools
InVision.iSignIt	Signature capture
InetThing.InetThing	HTTP communication
Label	Standard label
ListBox	Standard listBox
ListView	Display Items
MGCEBarsNPOps.PopupMenu	Popup menu
MGCEBarsNPOps.Progress	Windows CE progress bars
MGCEBarsNPOps.Scrollbar	Windows CE scrollbars
MGCEBarsNPOps.StatusBar	Windows CE StatusBar
MGCEBarsNPOps.Trackbar	Horizontal & vertical trackbars
MGCEBarsNPOps.VUMeter	Horizontal & vertical meters
MGCEListView.ListView	List view
MGCEMail.Mail	Mail client
MGCENet.IPAddress	IP address control
MGCENet.HTML	HTML control
MGCERichEdit.RichEdit	Rich edit control
MGCERichInk.RichInk	Rich ink (scratchpad) control
MGCETreeView.TreeView	Tree view
MGCEWin32.API	Win32 API
MGCEWin32.Tray	System tray access
MGCEWin32.Registry	Windows CE registry access
MGCEWin32.Timer	Regular interval events
MGCEWin32.RAS	remote access API
NSBasic.DialogX.1	Custom dialog boxes
NSBasic.Phone.1	Phone Edition functions
OptionButton	Radio style button
Output	Main runtime background

RegistryControl.RegCtl
PictureBox
Pocketoutlook.application
Pocketsoap.Envelope.2
Pocketsoap.HTTPTransport.2
S309.PictureBox.1
S309.Timer.1
S309.UserNotification.1
TabStrip
TextBox
Time
TreeView
ViaXML.ViaXMLClient
VscrollBar
Winsock

Owner information
For pictures and text
Access Pocket Outlook data
SOAP client core object
SOAP client HTTP transport
Improved PictureBox
Timer control
User Notification dialog
Tabs across the top
Standard text input box
Standard time picker
Tree of Data
Web Services
Vertical Scrollbar
TCP/IP communication

Common Object Properties

(All properties do not exist in all objects.)

Alignment, BackColor, Bottom, Caption, Enabled, FontBold, FontItalic, FontName, FontSize, FontStrikethru, FontUnderline, FontWeight, ForeColor, FormatLong, Height, Hwnd, IntegralHeight, Left, ListCount, ListIndex, Max, MaxLength, Min, Multiline, NewIndex, Right, Scrollbars, SelLength, SelStart, SelText, Sorted, Style, Tabstop, Tag, Text, Top, Value, Visible, Width

Common Object Events

Each object may have events that call back to your program.

Some common events are:

Change, Click, DblClick, DropDown, GotFocus

Common Object Methods

Each object may have methods your program can call. Some common methods are:

AddItem, Clear, Hide, RemoveItem, SetFocus, Show

Visit us at <http://www.nsbasic.com>.

You can send questions to us at info@nsbasic.com.

© 2003 NS Basic Corporation. Specifications are subject to change and improvement.



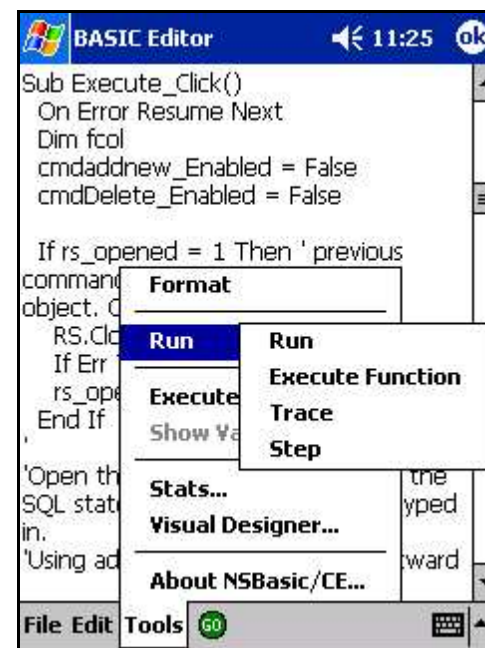
NS Basic/CE 4.0 Reference Card

The easiest way to program Windows CE!

NB Basic/CE is a powerful BASIC development environment for Windows CE. You can quickly and easily code for Pocket PC 2000, Pocket PC Phone Edition, Pocket PC, Palm-size PC (CE 2.11), Handheld PC 2002, Handheld PC Pro and Handheld PC.

NS Basic/CE is a full, modern implementation of BASIC, with proper subroutines, variant data types and no line numbers. Memory requirements are low and execution speed is excellent. Microsoft's User Interface Guidelines are adhered to.

You can code using NS Basic's powerful desktop interactive development environment or on the device itself. An emulator allows testing of most code on the desktop before downloading to the device. Here is how the IDE looks on a Pocket PC:



The desktop development environment will be familiar to anyone who has used VB. When you run your program on the desktop, it will automatically ActiveSync to your device and run, for fast, productive development.

NS BASIC Corporation has been making development tools for handheld devices since 1993. Close to 20,000 developers use NS Basic products worldwide to create apps for enterprise, professional and personal applications.

Statements

NS Basic/CE features a powerful, easy to use syntax that will be familiar to VB and VBScript programmers, with extensions to make use of Windows CE features.

```
AddObject objectID, [Name[,x,y,width, height]]
Break [prompt[,statements]]      'For debugging
Bye
Call procedurename[(arglist...)]  'Call" is optional.
Chain path, reset                'path from root, reset boolean
Const name=exp                   'Can be prefaced Public, Private
Dim nameA[(<subscripts>)], nameB..., nameC...,
Do [{While | Until} <cond>] <statements>
Loop [{While | Until} <cond>]
Erase arrays                      'recover memory from array
For counter=start To end[Step step]
    <statements>
Next
For Each element In collection
    <statements>
Next
Function procedureName[(arglist)]
    <statements>
End Function                     'Can be prefaced Public, Private
If condition Then <statements> [Else<statements>]
If condition Then
    <statements>
[Elseif condition Then
    <statements>]]...
[Else
    <statements>]]
End If
KeyPreview =exp                  'exp is boolean
KillFocus()
On Error Resume Next
On Error Goto 0
Option Explicit
Print expA[, exp1[, exp2[, ...]]]  'Max of 20 expressions
Randomize [number]
ReDim [Preserve] nameA[(<sub>)][, nameB... ]
Rem remarks                      ' (single quote) can also be used
Select Case testexp
    [Case explist
        <statements>]...
    [Case Else
        <elasticsearch>]]
End Select
Set objectvariable={objectexp | NOTHING}
SetMenu menustr[[menukey], menulist]
ShellExecute verb,file[,parms]    '"OPEN",file,parms
Sleep number                     'time in milliseconds
Sub procedurename[(arglist)]
    <statements>
End Sub                          'Can be prefaced Public.Private
Sleep int                        'sleep int milliseconds
WaitCursor status               'status is boolean
While condition
    <statements>
Wend
```

Functions

```
Abs(number)
Array(list)
Asc(string)
Atn(number)
CBool(exp)
CByte(exp)
CCur(exp)
CDate(exp)
CDBl(exp)
Chr(number)
CInt(exp)
CLng(exp)
Cos(number)
CSng(exp)
CStr(exp)
CurrentPath                      'returns current path
Date
DateAdd(interval, number, date)
DateDiff(interval,d1,day2[, 1stdayofwk[, 1stwkofyr]])
DatePart(interval, day[, 1stdayofwk[, 1stwkofyr]])
DateSerial(year, month, day)
DateValue(date)
Day(date)
Eval(string)
Execute(string)
Exp(number)
Filter(stringarray, value[, include[, compare]])
Fix(number)
FormatCurrency(exp[, fractionaldigits[, leadingdigit[,
    parensfornegative[, groupdigits]]]])
FormatDateTime(date[, formatname])
FormatNumber(exp[, fractionalidigits[, leadingdigit[,
    parensfornegative[, groupdigits]]]])
FormatPercent(exp[, fractionaldigits[,
    leadingdigit[,parensfornegative[, groupdigits]]]])
Hex(number)
Hour(time)
InputBox(prmpft[, title[, default[, x[, y]]]])
InStr([i, j], string2[, compare])
InStrRev(string1, string2[, start[, i]])
Int(number)
IsArray(exp)
IsDate(exp)
IsEmpty(exp)
IsNull(exp)
IsNumeric(exp)
IsObject(exp)
Join(stringarray[, delimiter])
LBound(array[, dimension])
LCASE(string)
Left(string, length)            'LeftB() is bitwise
Len({string | variable})        'LenB() is bitwise
Log(number)
LTrim(string)
Mid(string, start[, length])    'MidB() is bitwise
Minute(time)
Month(date)
MonthName(date[, abbreviate])
MsgBox(prompt[, buttons[, i]])
Now
```

```
NSBVersion                      'returns NS Basic's version
Oct(number)
Replace(target, find, source[, strt[, count[, comp]]])
Right(string, length) RightB() is a bitwise
Rnd[(number)]
Round(number[, fractionaldigits])
RTrim(string)
Second(time)
Sgn(number)
Sin(number)
Space(number)
Split(string[, delimiter[, count[, compare]]])
Sqr(number)
StrComp(string1,string2[, compare])
String(number, character)
StrReverse(string)
Tan(number)
Time
TimeSerial(hour, minute, second)
TimeValue(time)
Trim(string)
TypeName(variable)
UBound(array[, dimension])
UCASE(string)
VarType(variable)
Weekday(date[, firstdayofweek])
WeekdayName(number[, abbrev[, 1stdayofwk])
Year(date)
```

Constants

```
Color                            vbBlack, vbRed, vbGreen, vbYellow, vbBlue,
                                vbMagenta, vbCyan, vbWhite
Comparison                       vbBinaryCompare, vbTextCompare
Date/Time                        vbSunday, vbMonday, vbTuesday,
                                vbWednesday, vbThursday, vbFriday,
                                vbSaturday, vbFirstJan1, vbFirstFourDays,
                                vbFirstFullWeek, vbUseSystem,
                                vbUseSystemDayOfWeek.
Date Format                       vbGeneralDate, vbLongDate, vbShortDate,
                                vbLongTime, vbShortTime
MsgBox                           DisplayOptions (add values to combine)
                                vbOKOnly,vbOKCancel,
                                vbAbortRetryIgnore, vbYesNoCancel,
                                vbYesNo, vbRetryCancel, vbCritical,
                                vbQuestion, vbExclamation, vbInformation,
                                vbDefaultButton1, vbDefaultButton2,
                                vbDefaultButton3, vbDefaultButton4,
                                vbApplicationModal, vbSystemModal
MsgBox returns                   vbOK, vbCancel, vbAbort, vbRetry,
                                vbIgnore, vbYes, vbNo
String                           vbCr, vbCrLf, vbFormFeed, vbLf,
                                vbNewLine, vbNullChar, vbNullString,
                                vbTab, vbVerticalTab
VarType                          vbEmpty, vbNull, vbInteger, vbLong,
                                vbSingle, vbDouble, vbCurrency, vbDate,
                                vbString, vbObject, vbError, vbBoolean,
                                vbVariant, vbDataObject, vbDecimal,
                                vbByte, vbArray
```