

CONVERTITORE DRM (Digital Radio Mondiale)

9012 kHz → 12 kHz

INSTALLATION ON ICOM IC-706/MK/MKiiG

by Paolo Cravero IK1ZYW (ik1zyw@yahoo.com), v. 1.0



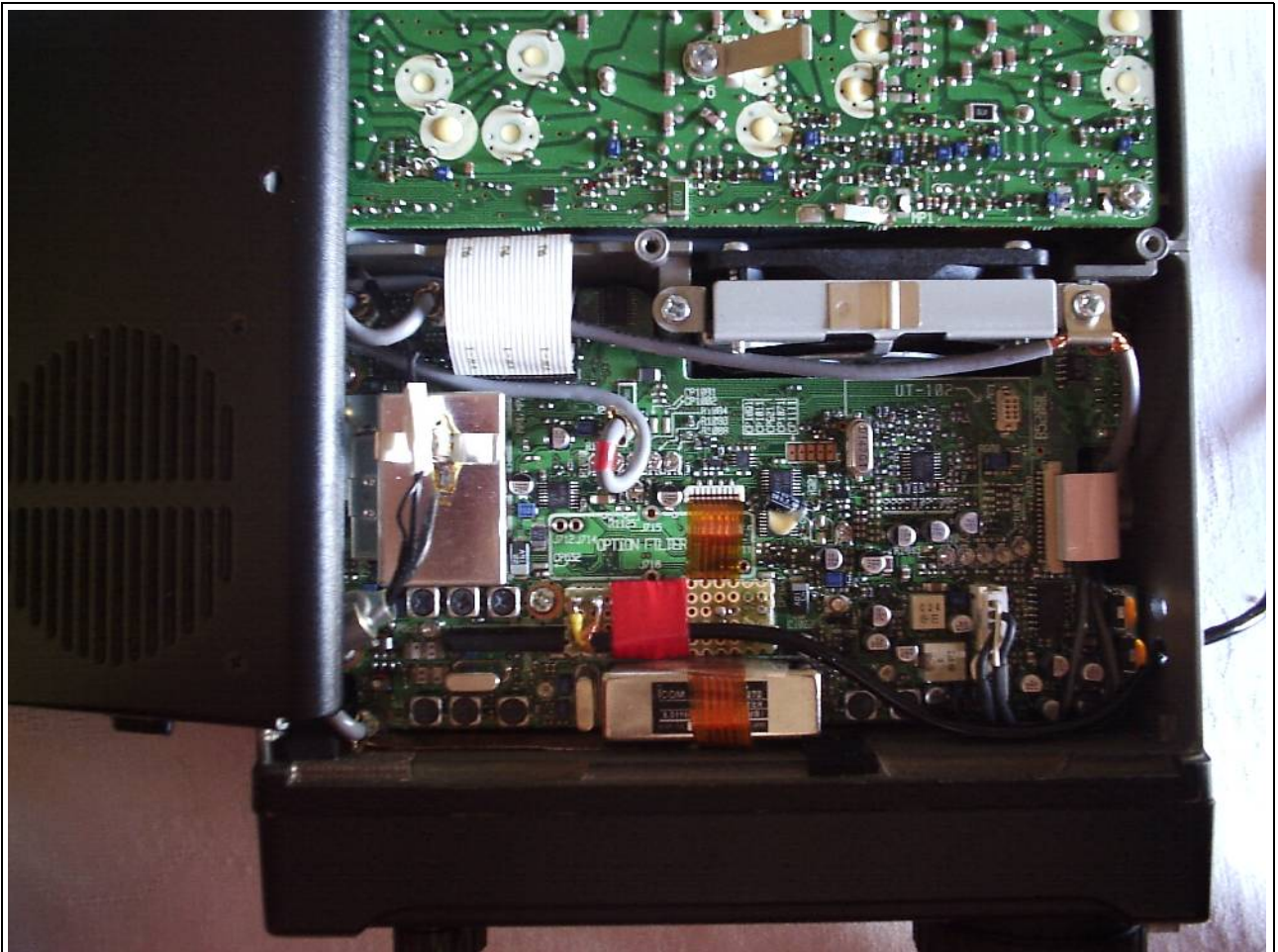
Remove three screws from the upper panel and two on the side as shown.



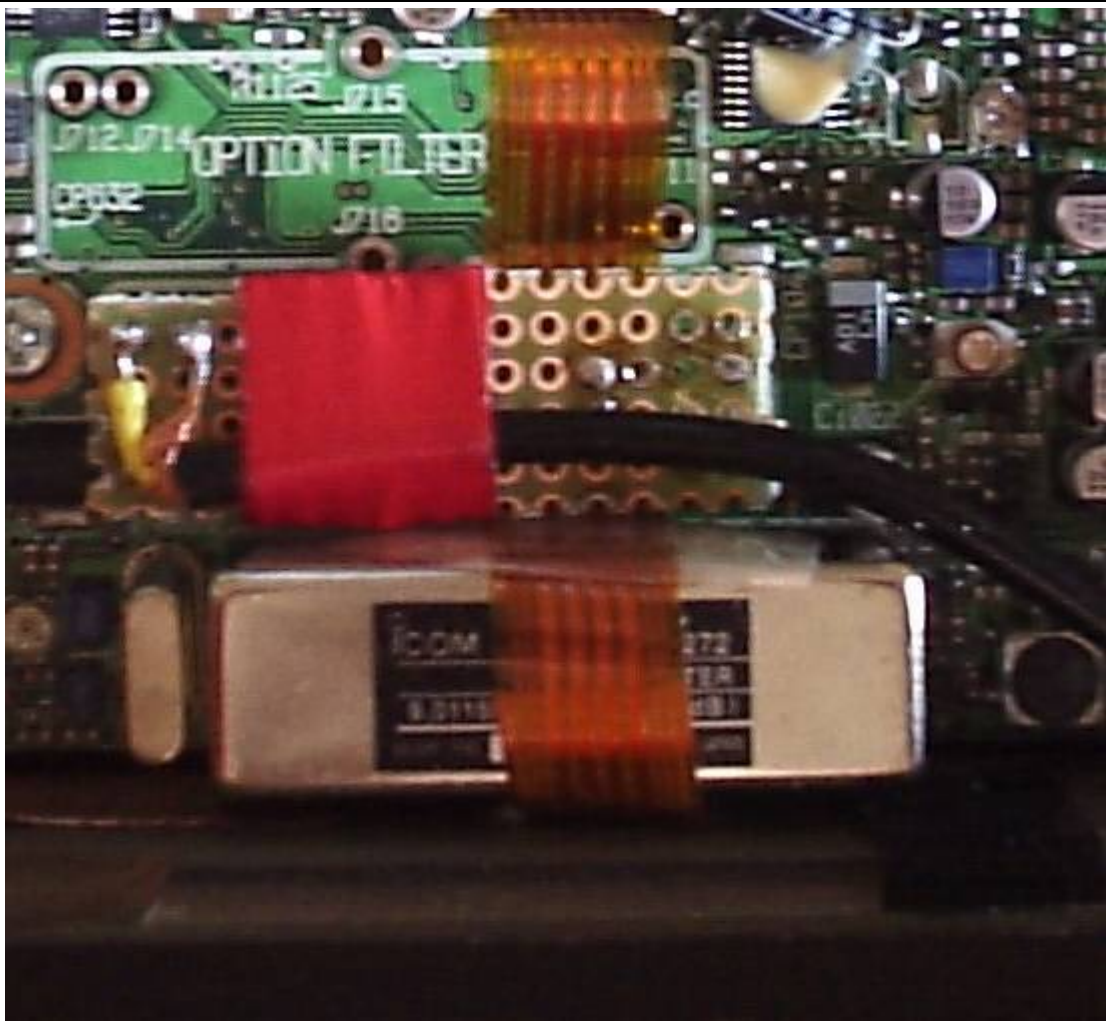
Carefully lift the top cover as shown, starting from the back of the radio.



Lay the upper corner on the LHS of 706. Be very careful not to pull the loudspeaker cable.



Insert the connector shipped with the converter in the optional filter plug 1. The corner with the cable soldered must point towards left-back of the RTX, so that the cable goes towards the tuning knob. It is possible to pass the cable through one of the side holes on the 706, but first one of the connectors must be disassembled.



Zoom-in on the connector. Note how the flat cable inside the 706 passes underneath the DRM converter connector. It can pass above as well.



Prior to using the converter the 706 must be configured so that it allows an optional filter to be switched in while receiving (M3 > FIL in USB or LSB mode). Enter the service-mode menu pressing "LOCK" key while powering-up the transceiver.



Use M-CH rotary switch to get to option “9 OPT. FIL 1”. It should appear as shown if no other filter was/is installed.



Turn the tuning knob until an SSB filter name appears, such as FL-223. Power off and on again the transceiver. Tune in a DRM emission and follow instructions from the converter user manual.